

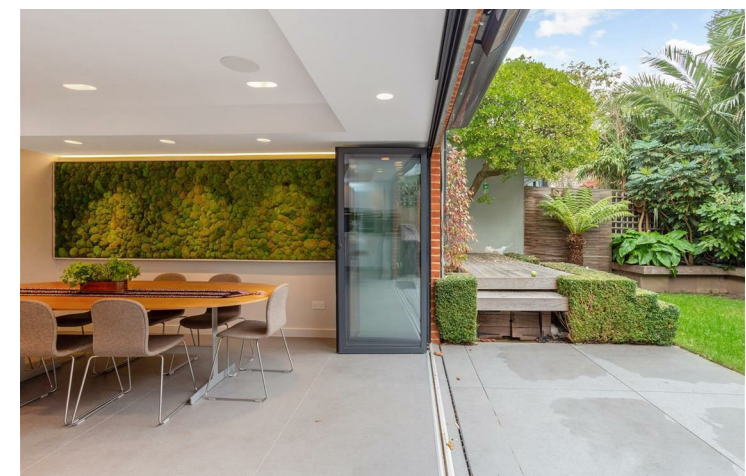
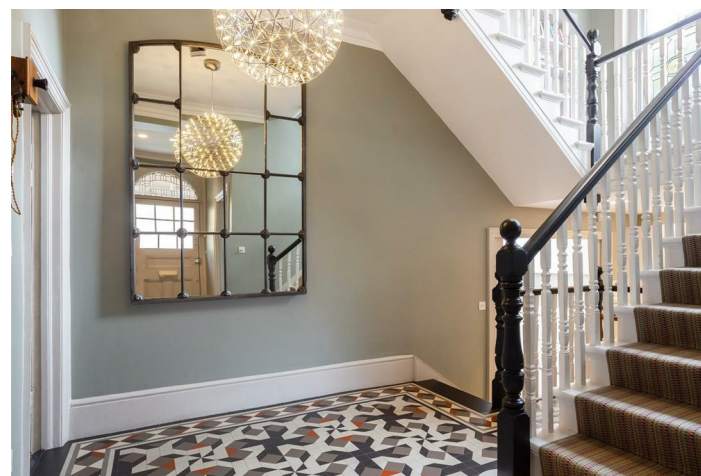


Fairfax Road, London, W4
Offers In Excess Of £3,500,000

WHITMAN & CO.
SALES · LETTINGS · COMMERCIAL



SOLD OFF MARKET - CONTRACTS EXCHANGED. An immaculately presented, double-fronted period family home situated in this extremely popular residential road within the renowned Bedford Park Conservation Area. The property offers exceptional living and entertaining space within this peaceful environment, just a short walk to both Turnham Green Terrace and Chiswick High Road. The accommodation provides a spacious open plan kitchen/dining room with doors opening onto a secluded landscaped garden, a main reception room, a rear sitting room, a spacious entrance hall with tessellated tiled flooring and feature galleried staircase, front study/occasional room, lower ground floor utility room and cloakroom, principal bedroom suite with dressing room and bathroom with separate walk in shower, four further double bedrooms and two further bathrooms, landscaped front and rear gardens. Fairfax Road is a quiet, tree-lined street within a short walk of Chiswick High Road's shops, cafes and restaurants. Transport links include Turnham Green and Stamford Brook stations, local bus routes and the A4/M4 for routes in and out of London. No onward chain.

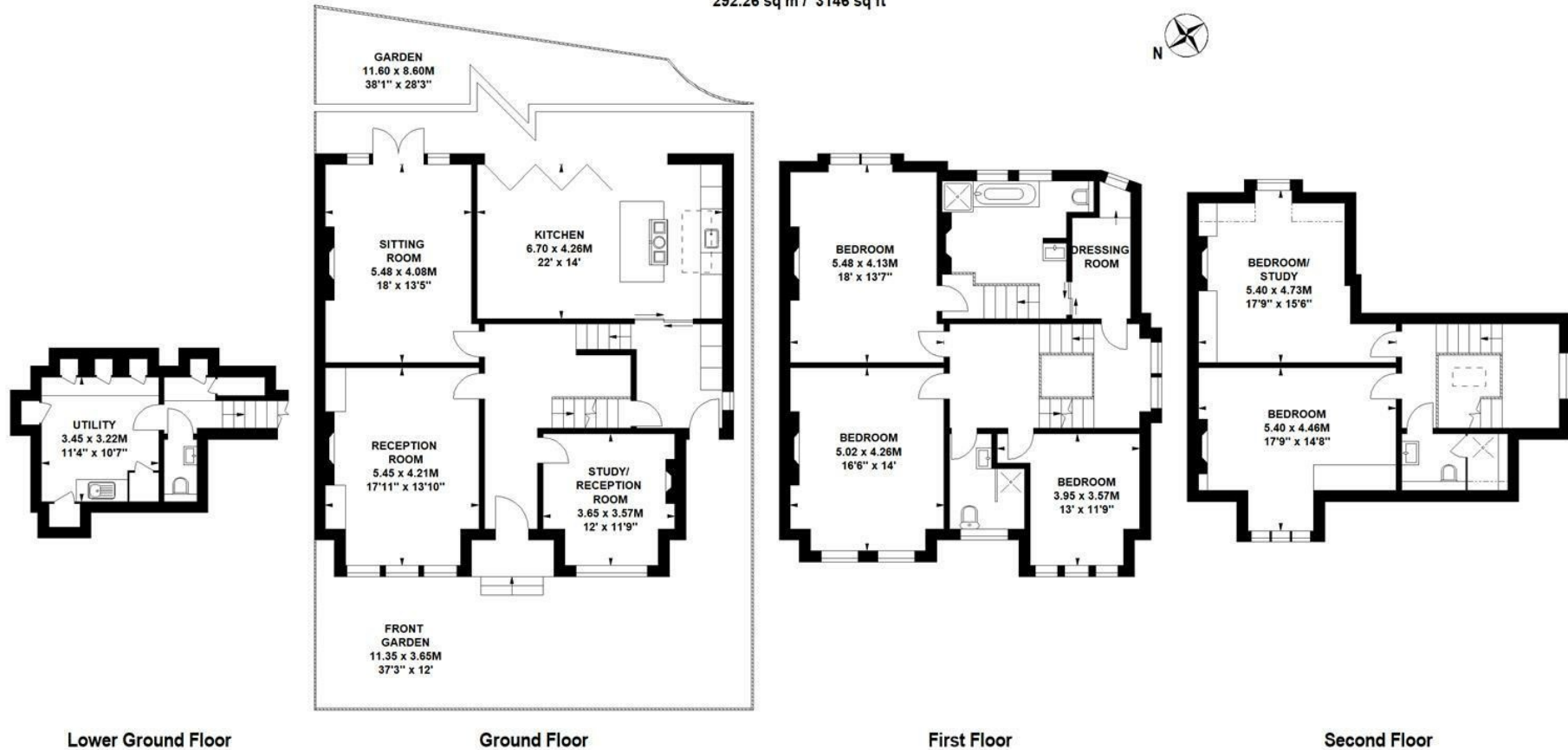


Fairfax Road, W4

Approximate gross internal area

292.26 sq m / 3146 sq ft

Key :
CH - Ceiling Height



Not to scale, for guidance only and must not be relied upon as a statement of fact.
All measurements and areas are approximate only

- SOLD OFF MARKET - CONTRACTS EXCHANGED
- Within the sought after Bedford Park Conservation Area
- Five beds/three baths

- Imposing immaculately presented period family home
- In excess of 3000sqft
- No onward chain

Tenure - Freehold
Local Authority - Hounslow
Council Tax - Band G

